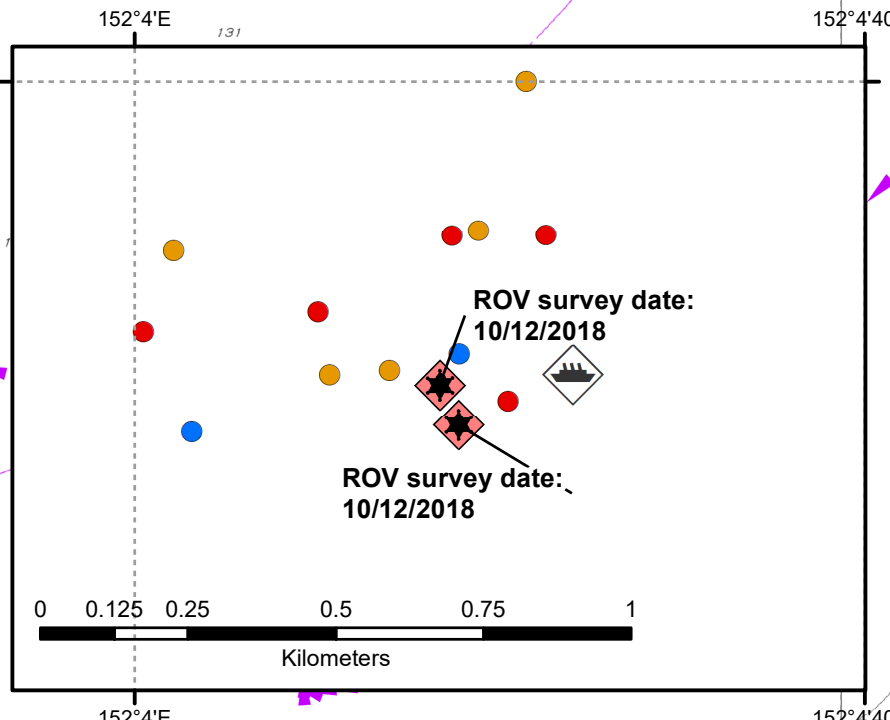
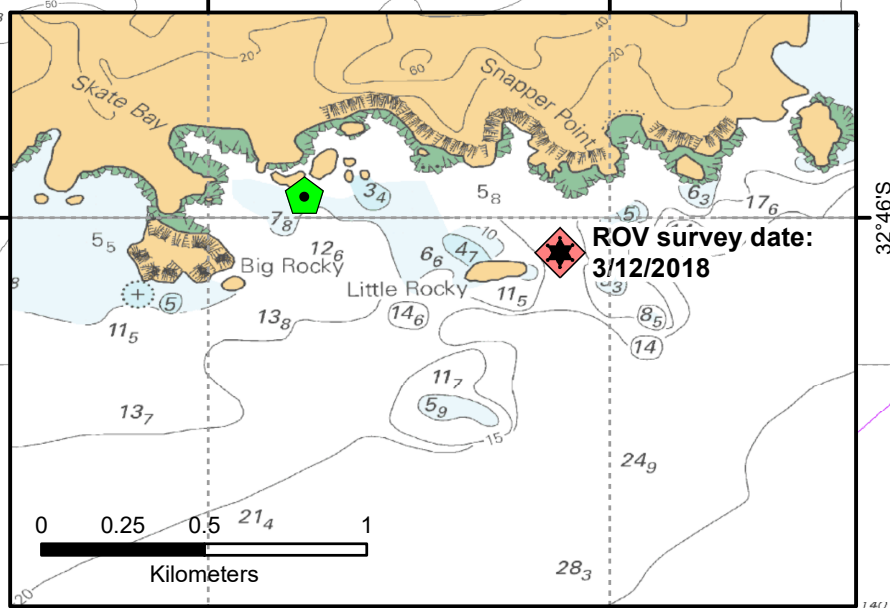
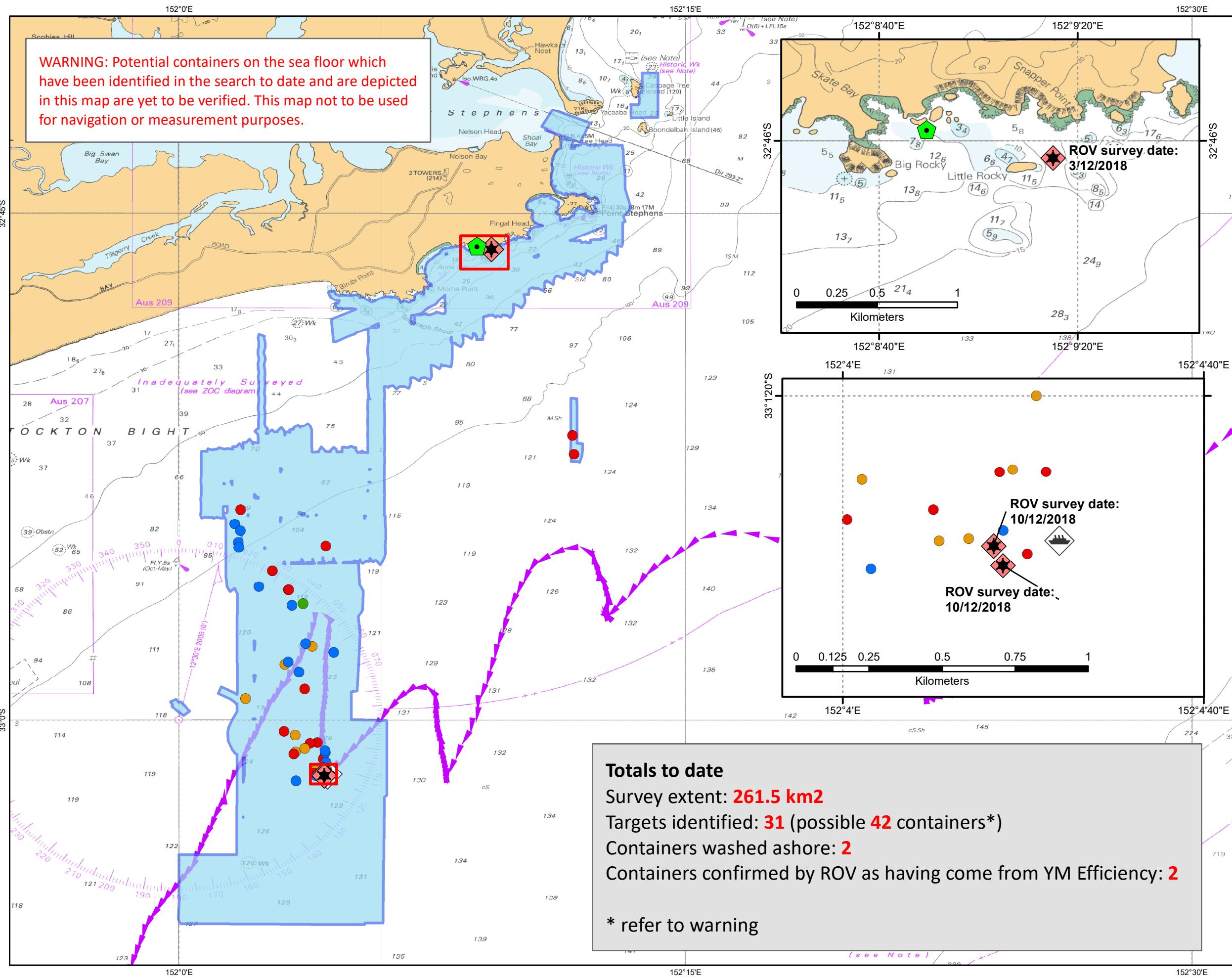


MV YM EFFICIENCY - Hydrographic Surveys to date

as at 11 December 2018 11:00 (AEDT)



- tyres sighted along coast
- ROV survey location
- Probable container
- Probable container - damaged
- Solid shape - no designation
- Probable debris
- initial report
- Surveyed areas to date
- MV YM EFFICIENCY track

N

W E S

0 0.75 1.5 3 4.5 6

Nautical Miles

0 1.5 3 6 9 12

Kilometers

Background chart courtesy of Australian Hydrographic Service

Coordinate System: GCS WGS 1984

Datum: WGS 1984

Units: Degree

Totals to date
 Survey extent: **261.5 km²**
 Targets identified: **31** (possible **42** containers*)
 Containers washed ashore: **2**
 Containers confirmed by ROV as having come from YM Efficiency: **2**

* refer to warning

